



6390 Philips Highway  
 Jacksonville, FL 32216  
 Phone (904) 737-7144

**SPECIFICATION DATA SHEET**

Date: 11/04/14 rev. Drawn by: M.D.C.

**Model No. 1292-CRD**

**R-4.2 FIBERGLASS PLENUM BOX  
 with CEILING RADIATION DAMPER**

**DIMENSIONAL DATA**

OUTSIDE DIMENSION OF BOX = REGISTER  
 SIZE PLUS 2".  
 MAXIMUM HEIGHT = 16"  
 RADIATION DAMPER RECESSED 2".  
 MINIMUM REGISTER SIZE = 4" x 4".  
 MAXIMUM REGISTER SIZE = 16" x 16" (MAXIMUM  
 AREA 256 SQ. IN.)  
 MINIMUM COLLAR OUTLET = 4" DIAMETER.  
 MAXIMUM COLLAR OUTLET = 10" DIAMETER.

**FABRICATION DATA**

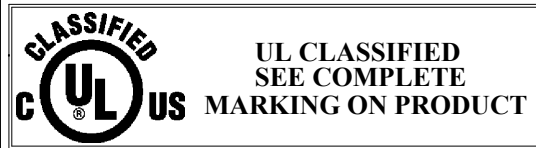
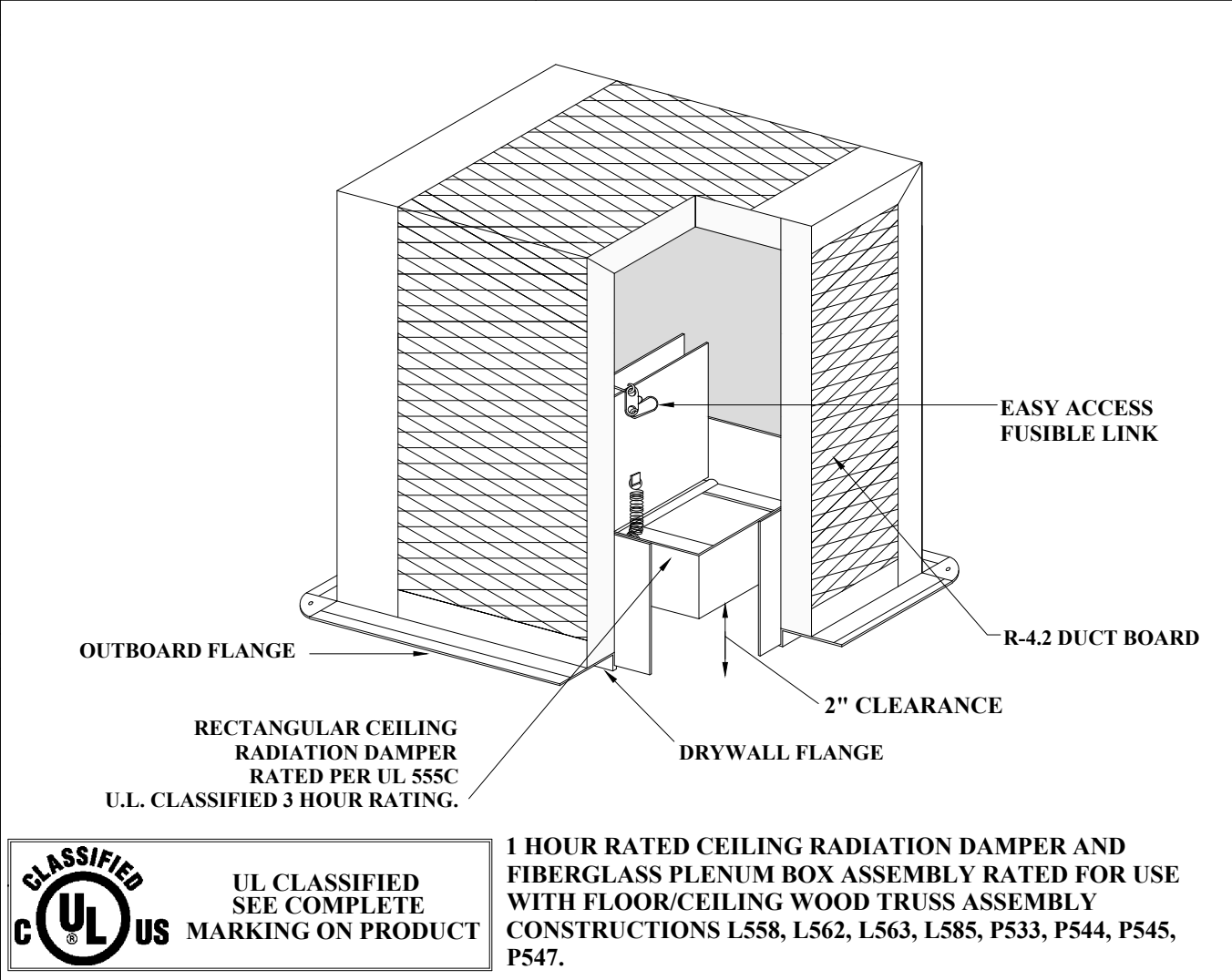
METAL FRAME: ANGLES SECURING DUCT BOARD  
 SEAMS.  
 R-4.2 DUCT BOARD

**FEATURES**

DUCT BOARD TOP AND SIDES.  
 R-4.2 INSULATION.  
 DUCT BOARD TOP AND SIDES ALLOW FOR  
 VARIOUS COLLAR OUTLET SIZES.  
 BLACK INTERIOR.

**OPTIONS**

AVAILABLE WITH EXTENDED DRYWALL FLANGE  
 FOR DOUBLE LAYER GYPSUM CEILING  
 MATERIALS INSTALLATION.



**1 HOUR RATED CEILING RADIATION DAMPER AND  
 FIBERGLASS PLENUM BOX ASSEMBLY RATED FOR USE  
 WITH FLOOR/CEILING WOOD TRUSS ASSEMBLY  
 CONSTRUCTIONS L558, L562, L563, L585, P533, P544, P545,  
 P547.**

**SPECIAL NOTES**

DUCT COLLAR(S): CUTTING AND INSTALLATION OF COLLARS FOR UL CLASSIFIED CLASS 0 OR 1  
 FLEXIBLE AIR DUCTING CONNECTION COMPLETED BY OTHERS, (3) OUTLETS MAXIMUM.  
 CROWN MODEL No. 1292-CRD CORRESPONDS TO MODEL CRD-50-FGPB-4.2-CP AND  
 MODEL CRD-50-EA-FGPB-4.2-CP. UL FILE No. R15858  
 LLOYD INDUSTRIES CEILING RADIATION DAMPER U.L. CLASSIFIED 3 HOUR RATING USED IN ASSEMBLY.



6390 Philips Highway  
 Jacksonville, FL 32216  
 Phone (904) 737-7144

**SPECIFICATION DATA SHEET**

**Model No. 1592-CRD**

**R-6 FIBERGLASS PLENUM BOX  
 with CEILING RADIATION DAMPER**

Date: 11/04/14 rev.

Drawn by: M.D.C.

**DIMENSIONAL DATA**

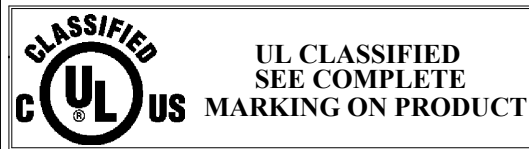
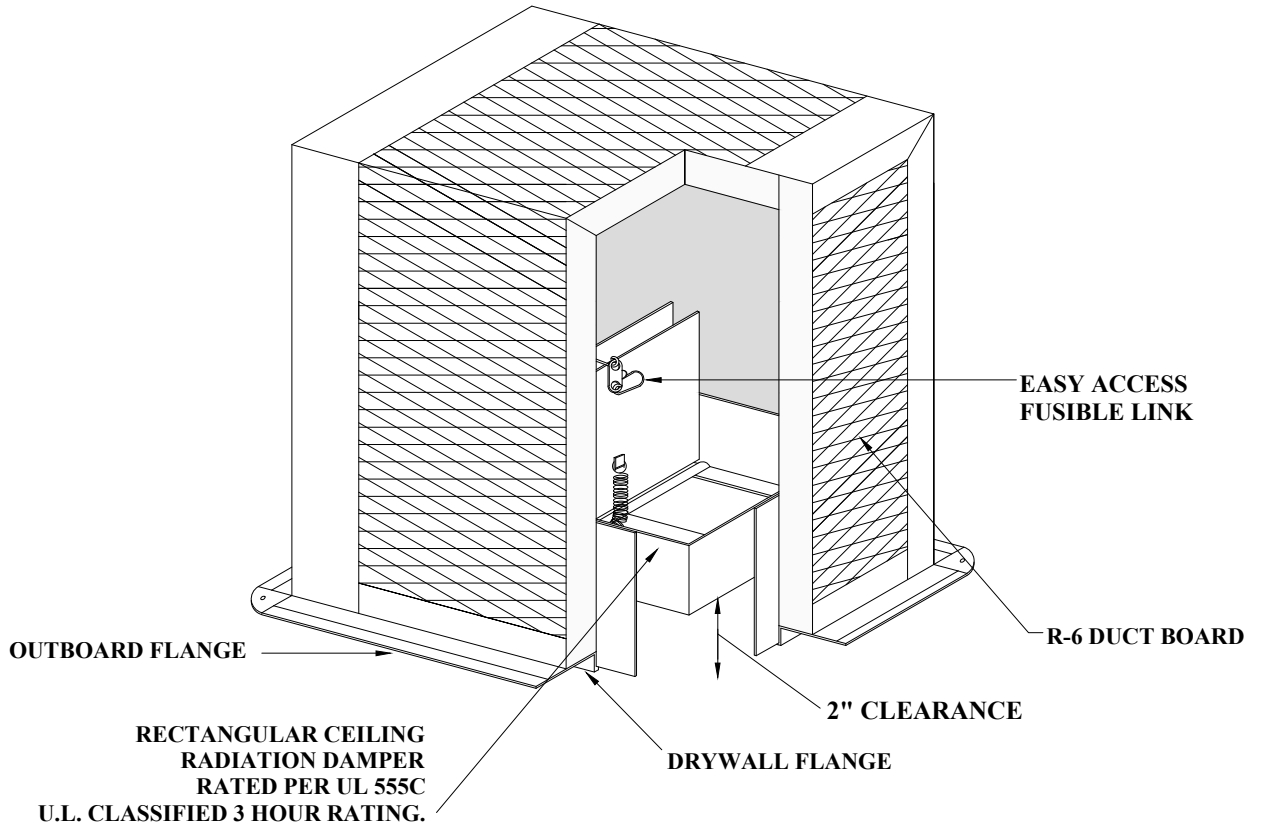
OUTSIDE DIMENSION OF BOX = REGISTER SIZE PLUS 3".  
 MAXIMUM HEIGHT = 16"  
 RADIATION DAMPER RECESSED 2".  
 MINIMUM REGISTER SIZE = 4" x 4".  
 MAXIMUM REGISTER SIZE = 16" x 16" (MAXIMUM AREA 256 SQ. IN.)  
 MINIMUM COLLAR OUTLET = 4" DIAMETER.  
 MAXIMUM COLLAR OUTLET = 10" DIAMETER.

**FABRICATION DATA**

METAL FRAME: ANGLES SECURING DUCT BOARD SEAMS.  
 R-6.0 DUCT BOARD

**FEATURES**

DUCT BOARD TOP AND SIDES.  
 R-6.0 INSULATION.  
 DUCT BOARD TOP AND SIDES ALLOW FOR VARIOUS COLLAR OUTLET SIZES.  
 BLACK INTERIOR.



**1 HOUR RATED CEILING RADIATION DAMPER AND FIBERGLASS PLENUM BOX ASSEMBLY RATED FOR USE WITH FLOOR/CEILING WOOD TRUSS ASSEMBLY CONSTRUCTIONS L558, L562, L563, L585, P533, P544, P545, P547.**

**OPTIONS**

AVAILABLE WITH EXTENDED DRYWALL FLANGE FOR DOUBLE LAYER GYPSUM CEILING MATERIALS INSTALLATION.

**SPECIAL NOTES**

DUCT COLLAR(S): CUTTING AND INSTALLATION OF COLLARS FOR UL CLASSIFIED CLASS 0 OR 1 FLEXIBLE AIR DUCTING CONNECTION COMPLETED BY OTHERS, (3) OUTLETS MAXIMUM.  
 CROWN MODEL No. 1592-CRD CORRESPONDS TO MODEL CRD-50-FGPB-6.0-CP AND MODEL CRD-50-EA-FGPB-6.0-CP. UL FILE No. R15858  
 LLOYD INDUSTRIES CEILING RADIATION DAMPER U.L. CLASSIFIED 3 HOUR RATING USED IN ASSEMBLY.



**CROWN**  
PRODUCTS COMPANY, INC.

6390 Philips Highway  
Jacksonville, FL 32216  
Phone (904) 737-7144

CROWN MODEL No. 1292-CRD CORRESPONDING TO  
MODEL CRD 50-FGPB-4.2-CP AND CRD-50-EA-FGPB-4.2-CP  
CROWN MODEL No. 1592-CRD CORRESPONDING TO  
MODEL CRD 50-FGPB-6.0-CP AND CRD 50-EA-FGPB-6.0-CP

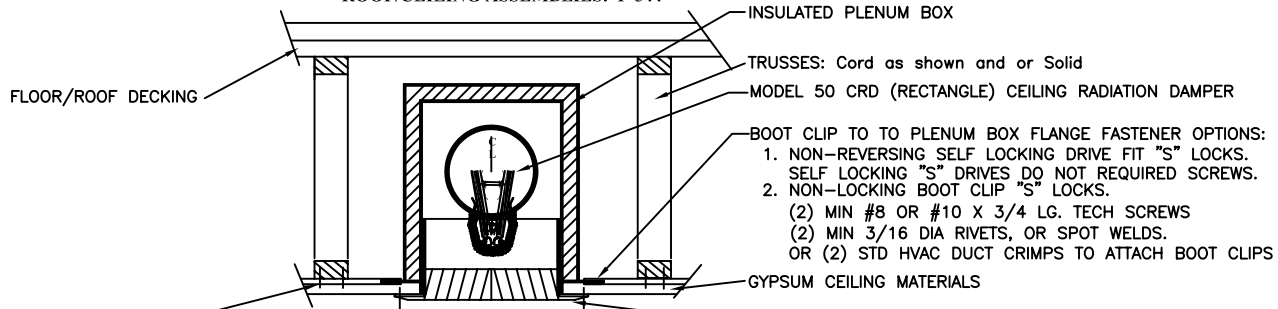
### TRUSS/GYPSUM INSTALLATION INSTRUCTIONS

MODEL CRD 50-FGPB-4.2-CP, CRD 50-EA-FGPB-4.2-CP (SIDE OUTLET) CRD WITH F/G BOX ASM.  
MODEL CRD 50-FGPB-6.0-CP, CRD-50-EA-FGPB-6.0-CP (SIDE OUTLET) CRD WITH F/G BOX ASM.

### FOR REGISTER/GRILLE AND DUCTED APPLICATIONS

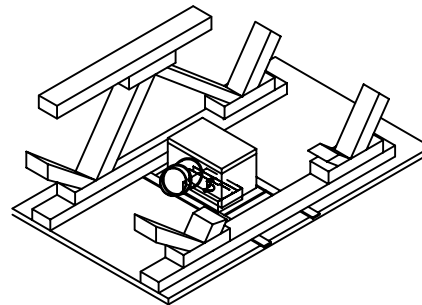
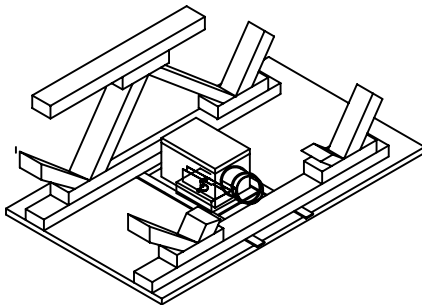
1 HOUR RATED ASSEMBLIES FOR USE IN UL RATED WOOD TRUSS TYPE PARTITIONS  
FLOOR/CEILING, ROOF/CEILING: TRUSS/GYPSUM CONSTRUCTIONS

FLOOR/CEILING ASSEMBLIES: L-563  
ROOF/CEILING ASSEMBLIES: P-544



BOOT CLIP (DRIVE "S" LOCKS) FASTENING TO TRUSS CORDS:  
#6 COMMON NAILS, OR #8 OR #10 X 1-1/2" LG SCREWS  
(2) FASTENERS PER BOOT CLIP, (1) AT EACH END MIN.  
THROUGH THE CEILING GYPSUM AND SECURED INTO THE TRUSS CORDS  
NOTE: INCREASE FASTENER LENGTH WHERE CEILING GYPSUM MATERIALS EXCEED 5/8" THICK.

REGISTER/GRILLE (SUPPLIED BY OTHER)  
OVERLAPS CEILING 3/4 TO 1"



**Notes:**

SIDE OUTLET THRU TRUSS CORD

SIDE OUTLET PARALLEL TO TRUSSES

- Before installing the damper, Model CRD-50-FGPB-4.2-CP (rectangle), and Model CRD-50-EA-FGPB-4.2-CP (rectangle) open the blades and hook the fusible link over the link catch on the opposite blade. Bend down the link catch to secure the link in position. For Model CRD-50-EA-FGPB-4.2-CP flex the spring wire and secure the link.
- Measure the actual truss centers and add approx. 6" to determine boot clip lengths. (2) required per box
- Drive (2) Self Locking "S" Boot Clips to the plenum box flange centering the plenum box as required. Where required to insure permanent attachment, fasten boot clips to the plenum box using the fasteners listed below. Note: When Non-Drive boot clips are used, fasten boot clips to the plenum box flange using a minimum of (2) #8 or #10 x 3/4" Lg sheet metal screws, (2) 3/16" diameter rivets, or (2) spot welds, for each boot clip.
- Boot Clips are fastened to joists or other structural members with a minimum of two fasteners for each mounting point using #6 common nails or #8/#10 x 1-1/2" min. lg screws. Note: Increase fastener length where gypsum/drywall ceiling materials exceed 5/8" thick.
- The clearance between each side of the ceiling damper and the duct drop shall be 1/8 inch maximum.
- Steel or Aluminum grille or diffuser to be attached to the duct drop or ceiling damper using #8 by 1/2 inch long sheet metal screws at 6 inches o.c. and a minimum of (3) places.

**IMPORTANT NOTES:**

REGISTER BOX/DROP DUCT INSTALLATIONS MUST BE INSULATED AND CONFORM TO LOCAL AUTHORITY REQUIREMENTS  
FASTENERS MUST NOT INTERFERE WITH THE DAMPER BLADES OPERATION.



NOTE:  
ALL INSTALLATIONS ARE SUBJECT TO LOCAL  
AUTHORITY APPROVAL PRIOR TO ORDERING AND  
INSTALLING DAMPERS.