



6390 Philips Highway
Jacksonville, FL 32216
Phone (904) 737-7144

SPECIFICATION DATA SHEET

MODEL No. 616-KD

NESTED COLLAR

Date: 01/09/15 rev.

Drawn by: M.D.C.

DIMENSIONAL DATA

SIZES AVAILABLE: 4" THROUGH 20" DIAMETER

COLLARS ARE 3" LONG FROM FLANGE TO EDGE OF COLLAR.

FABRICATION DATA

FABRICATED FROM HOT DIPPED GALVANIZED STEEL SHEET OF LOCK FORMING QUALITY PER ASTM-A653 CS TYPE B.

SIZES 4" THROUGH 12" = 30 GAUGE
SIZES 14" THROUGH 20" = 28 GAUGE

FEATURES

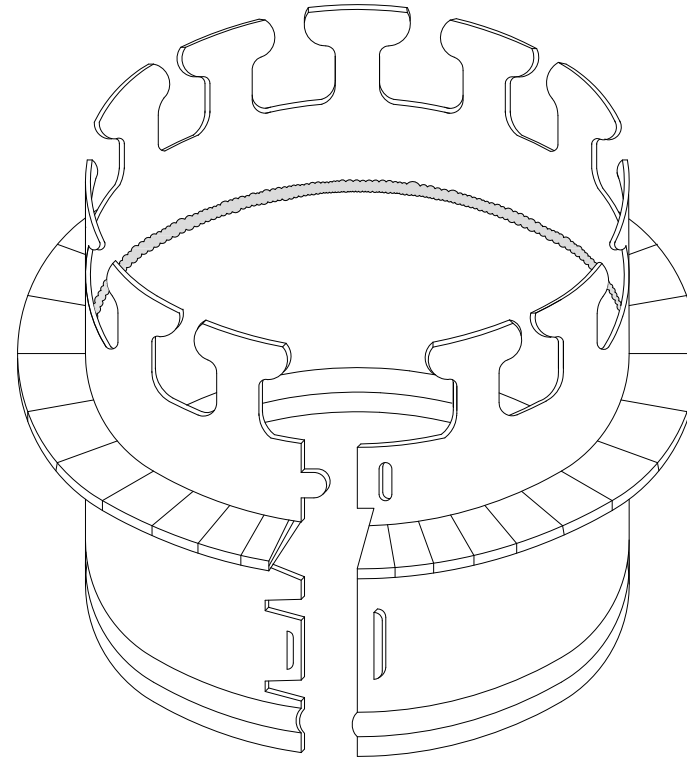
EASY BEND TABS.

3/4" OUTBOARD FLANGE INTERNALLY SEALED WITH HOT MELT MASTIC.

TABS ARE DESIGNED FOR 1", 1-1/2" & 2" THICK DUCT BOARD.

PRE-DRILLED DAMPER HOLES.

NESTED PACKAGING FOR MINIMAL STORAGE.



OPTIONS

SPECIAL NOTES

HOT MELT MASTIC USED TO SEAL FLANGE BEARS FIRE HAZARD CLASS 1, FLAME SPREAD LESS THAN 25, SMOKE DENSITY LESS THAN 50.

STEEL - U.L. FIRE HAZARD CLASSIFICATION, CLASS "0" AIR DUCT. FLAME SPREAD ZERO, SMOKE DEVELOPED ZERO.