



6390 Philips Highway
 Jacksonville, FL 32216
 Phone (904) 737-7144

SPECIFICATION DATA SHEET

Date: 11/30/20 rev. Drawn by: J.E.P.

MODEL No. 350

ROOF CAP
 with ROUND COLLAR IN PLATE

DIMENSIONAL DATA

SIZE	3"	4"	5"	6"	7"	10"
"A"	6"	6"	8"	8"	8"	11"
"B"	6"	6"	8"	8"	8"	11"
"C"	3-1/2"	3-1/2"	5"	5"	5"	5"
"D"	12"	12"	14"	14"	14"	17"
"E"	12"	12"	14"	14"	14"	17"
"F"	4-1/2"	4-1/2"	5"	5"	5"	7"
"G"	2-1/2"	2-1/2"	4"	4"	4"	7-1/2"

FABRICATION DATA

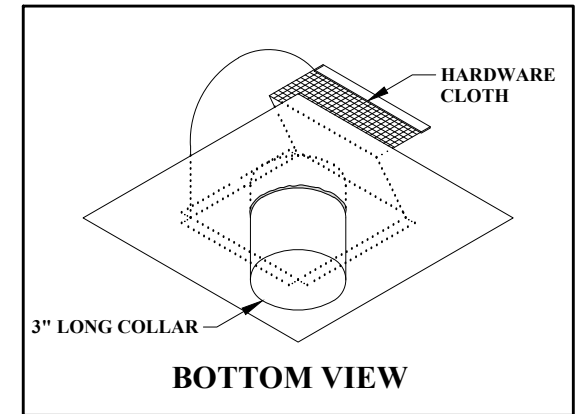
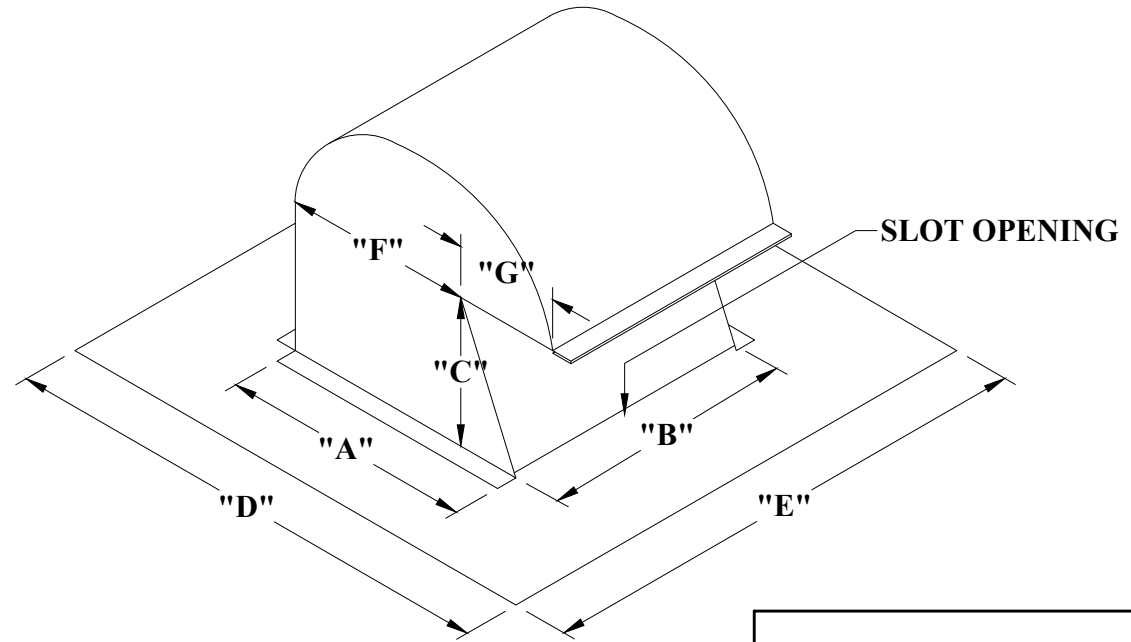
MATERIAL: 26 GAUGE GALVANIZED STEEL SHEET.

FEATURES

- 1/4" GALVANIZED STEEL HARDWARE CLOTH INSTALLED IN EXHAUST OPENING.
- ROUND COLLAR INSTALLED IN BOTTOM PLATE.
- ROUND COLLAR IS SEALED ON TOP SIDE OF OF PLATE WITH SILICONE SEALANT.
- SLOT OPENING FOR WATER DRAINAGE.

OPTIONS

- AVAILABLE IN .025" THICK ALUMINUM 3003-H14 ALLOY.
- AVAILABLE IN .018" THICK STAINLESS STEEL TYPE 304-2B. STAINLESS STEEL SCREEN UPON REQUEST.



SPECIAL NOTES

- WE DO NOT WARRANT THESE ROOF MOUNTED FITTINGS TO BE LEAK-PROOF AGAINST ALL WEATHER CONDITIONS.
- WE DO NOT GUARANTEE THE FITTINGS WILL PREVENT RAIN WATER INTRUSION FROM WIND BLOWN RAIN OR TORRENTIAL STORM CONDITIONS.
- ADDITIONAL SEALING MIGHT BE NECESSARY AT THE DISCRETION OF THE INSTALLER.