



6390 Philips Highway
 Jacksonville, FL 32216
 Phone (904) 737-7144

SPECIFICATION DATA SHEET

Model No. 1592-CRD

**R-6 FIBERGLASS PLENUM BOX
 with CEILING RADIATION DAMPER**

Date: 11/04/14 rev.

Drawn by: M.D.C.

DIMENSIONAL DATA

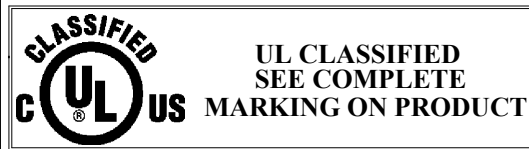
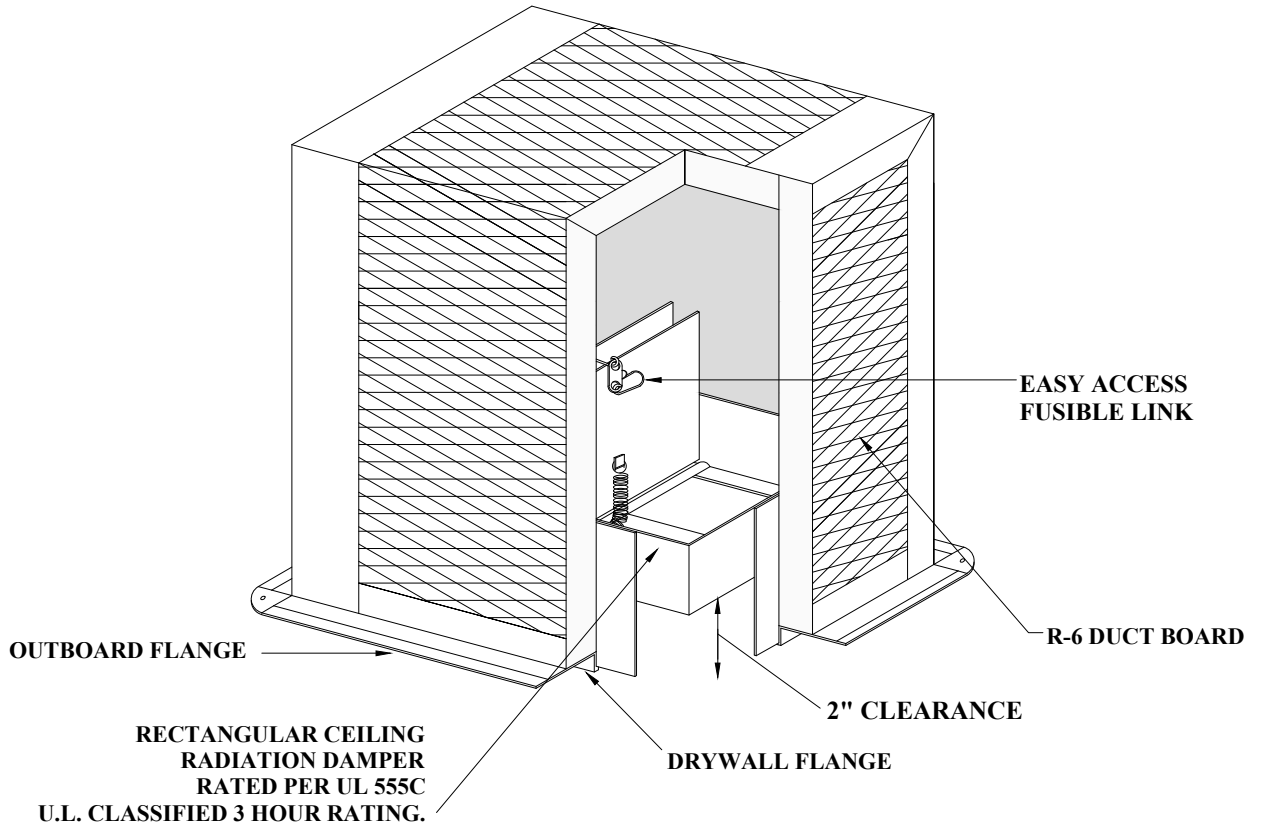
OUTSIDE DIMENSION OF BOX = REGISTER SIZE PLUS 3".
 MAXIMUM HEIGHT = 16"
 RADIATION DAMPER RECESSED 2".
 MINIMUM REGISTER SIZE = 4" x 4".
 MAXIMUM REGISTER SIZE = 16" x 16" (MAXIMUM AREA 256 SQ. IN.)
 MINIMUM COLLAR OUTLET = 4" DIAMETER.
 MAXIMUM COLLAR OUTLET = 10" DIAMETER.

FABRICATION DATA

METAL FRAME: ANGLES SECURING DUCT BOARD SEAMS.
 R-6.0 DUCT BOARD

FEATURES

DUCT BOARD TOP AND SIDES.
 R-6.0 INSULATION.
 DUCT BOARD TOP AND SIDES ALLOW FOR VARIOUS COLLAR OUTLET SIZES.
 BLACK INTERIOR.



1 HOUR RATED CEILING RADIATION DAMPER AND FIBERGLASS PLENUM BOX ASSEMBLY RATED FOR USE WITH FLOOR/CEILING WOOD TRUSS ASSEMBLY CONSTRUCTIONS L558, L562, L563, L585, P533, P544, P545, P547.

OPTIONS

AVAILABLE WITH EXTENDED DRYWALL FLANGE FOR DOUBLE LAYER GYPSUM CEILING MATERIALS INSTALLATION.

SPECIAL NOTES

DUCT COLLAR(S): CUTTING AND INSTALLATION OF COLLARS FOR UL CLASSIFIED CLASS 0 OR 1 FLEXIBLE AIR DUCTING CONNECTION COMPLETED BY OTHERS, (3) OUTLETS MAXIMUM.
 CROWN MODEL No. 1592-CRD CORRESPONDS TO MODEL CRD-50-FGPB-6.0-CP AND MODEL CRD-50-EA-FGPB-6.0-CP. UL FILE No. R15858
 LLOYD INDUSTRIES CEILING RADIATION DAMPER U.L. CLASSIFIED 3 HOUR RATING USED IN ASSEMBLY.