



6390 Philips Highway
Jacksonville, FL 32216
Phone (904) 737-7144

SPECIFICATION DATA SHEET

Date: 11/04/14 rev.

Drawn by: M.D.C.

Model No. 1592-CRD

**R-6 FIBERGLASS PLENUM BOX
with CEILING RADIATION DAMPER**

DIMENSIONAL DATA

OUTSIDE DIMENSION OF BOX = REGISTER
SIZE PLUS 3".

MAXIMUM HEIGHT = 16"

RADIATION DAMPER RECESSED 2".

MINIMUM REGISTER SIZE = 4" x 4".

MAXIMUM REGISTER SIZE = 16" x 16" (MAXIMUM
AREA 256 SQ. IN.)

MINIMUM COLLAR OUTLET = 4" DIAMETER.

MAXIMUM COLLAR OUTLET = 10" DIAMETER.

FABRICATION DATA

METAL FRAME: ANGLES SECURING DUCT BOARD
SEAMS.

R-6.0 DUCT BOARD

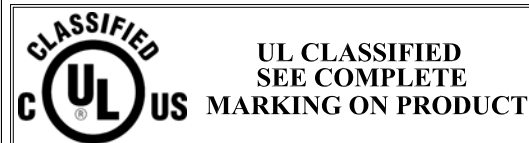
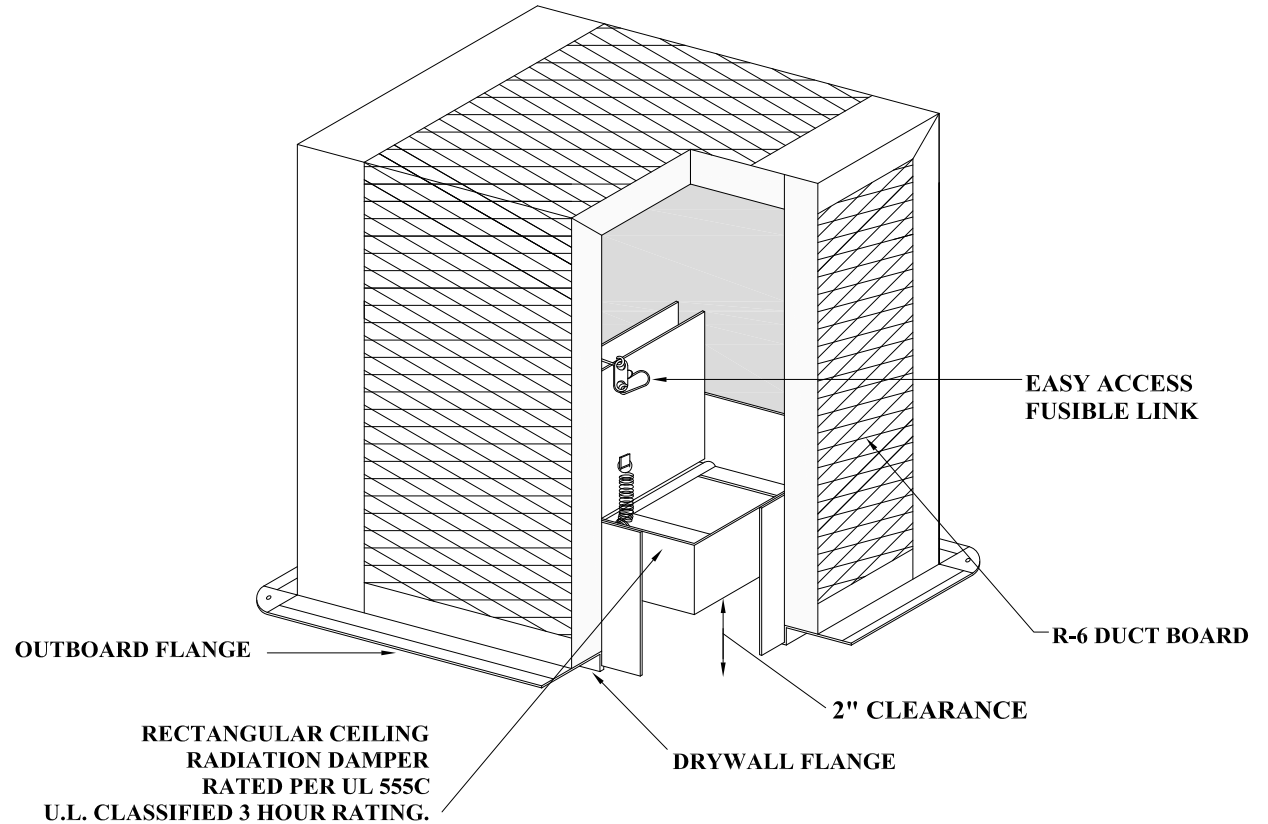
FEATURES

DUCT BOARD TOP AND SIDES.

R-6.0 INSULATION.

DUCT BOARD TOP AND SIDES ALLOW FOR
VARIOUS COLLAR OUTLET SIZES.

BLACK INTERIOR.



**1 HOUR RATED CEILING RADIATION DAMPER AND
FIBERGLASS PLENUM BOX ASSEMBLY RATED FOR USE
WITH FLOOR/CEILING WOOD TRUSS ASSEMBLY
CONSTRUCTIONS L558, L562, L563, L585, P533, P544, P545,
P547 AND EQUIVALENT TYPES.**

OPTIONS

AVAILABLE WITH EXTENDED DRYWALL FLANGE
FOR DOUBLE LAYER GYPSUM CEILING
MATERIALS INSTALLATION.

SPECIAL NOTES

DUCT COLLAR(S): CUTTING AND INSTALLATION OF COLLARS FOR UL CLASSIFIED CLASS 0 OR 1
FLEXIBLE AIR DUCTING CONNECTION COMPLETED BY OTHERS, (3) OUTLETS MAXIMUM.

CROWN MODEL No. 1592-CRD CORRESPONDS TO MODEL CRD-50-FGPB-6.0-CP AND
MODEL CRD-50-EA-FGPB-6.0-CP.

LLOYD INDUSTRIES CEILING RADIATION DAMPER U.L. CLASSIFIED 3 HOUR RATING USED IN ASSEMBLY.