



6390 Philips Highway  
 Jacksonville, FL 32216  
 Phone (904) 737-7144

**SPECIFICATION DATA SHEET**

**Model No. 1292-CRD**  
**R-4.2 FIBERGLASS PLENUM BOX**  
**with CEILING RADIATION DAMPER**

Date: 11/04/14 rev. Drawn by: M.D.C.

**DIMENSIONAL DATA**

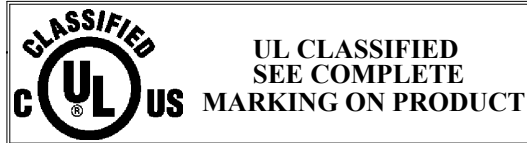
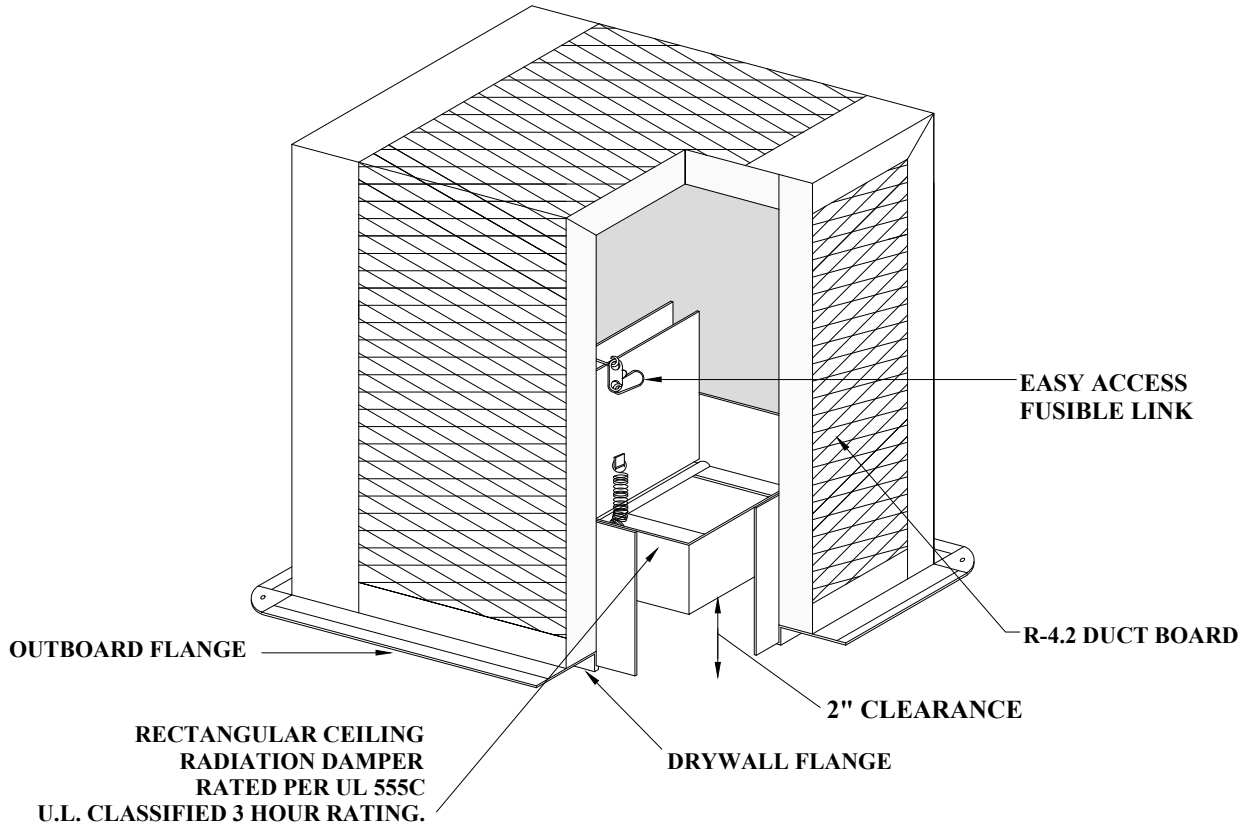
OUTSIDE DIMENSION OF BOX = REGISTER SIZE PLUS 2".  
 MAXIMUM HEIGHT = 16"  
 RADIATION DAMPER RECESSED 2".  
 MINIMUM REGISTER SIZE = 4" x 4".  
 MAXIMUM REGISTER SIZE = 16" x 16" (MAXIMUM AREA 256 SQ. IN.)  
 MINIMUM COLLAR OUTLET = 4" DIAMETER.  
 MAXIMUM COLLAR OUTLET = 10" DIAMETER.

**FABRICATION DATA**

METAL FRAME: ANGLES SECURING DUCT BOARD SEAMS.  
 R-4.2 DUCT BOARD

**FEATURES**

DUCT BOARD TOP AND SIDES.  
 R-4.2 INSULATION.  
 DUCT BOARD TOP AND SIDES ALLOW FOR VARIOUS COLLAR OUTLET SIZES.  
 BLACK INTERIOR.



**1 HOUR RATED CEILING RADIATION DAMPER AND FIBERGLASS PLENUM BOX ASSEMBLY RATED FOR USE WITH FLOOR/CEILING WOOD TRUSS ASSEMBLY CONSTRUCTIONS L558, L562, L563, L585, P533, P544, P545, P547.**

**OPTIONS**

AVAILABLE WITH EXTENDED DRYWALL FLANGE FOR DOUBLE LAYER GYPSUM CEILING MATERIALS INSTALLATION.

**SPECIAL NOTES**

DUCT COLLAR(S): CUTTING AND INSTALLATION OF COLLARS FOR UL CLASSIFIED CLASS 0 OR 1 FLEXIBLE AIR DUCTING CONNECTION COMPLETED BY OTHERS, (3) OUTLETS MAXIMUM.  
 CROWN MODEL No. 1292-CRD CORRESPONDS TO MODEL CRD-50-FGPB-4.2-CP AND MODEL CRD-50-EA-FGPB-4.2-CP. UL FILE No. R15858  
 LLOYD INDUSTRIES CEILING RADIATION DAMPER U.L. CLASSIFIED 3 HOUR RATING USED IN ASSEMBLY.