



6390 Philips Highway  
Jacksonville, FL 32216  
Phone (904) 737-7144

**SPECIFICATION DATA SHEET**

**Model No. 1292-CRD**

**R-4.2 FIBERGLASS PLENUM BOX  
with CEILING RADIATION DAMPER**

Date: 11/04/14 rev.

Drawn by: M.D.C.

**DIMENSIONAL DATA**

OUTSIDE DIMENSION OF BOX = REGISTER  
SIZE PLUS 2".

MAXIMUM HEIGHT = 16"

RADIATION DAMPER RECESSED 2".

MINIMUM REGISTER SIZE = 4" x 4".

MAXIMUM REGISTER SIZE = 16" x 16" (MAXIMUM  
AREA 256 SQ. IN.)

MINIMUM COLLAR OUTLET = 4" DIAMETER.

MAXIMUM COLLAR OUTLET = 10" DIAMETER.

**FABRICATION DATA**

METAL FRAME: ANGLES SECURING DUCT BOARD  
SEAMS.

R-4.2 DUCT BOARD

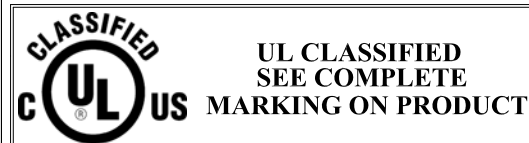
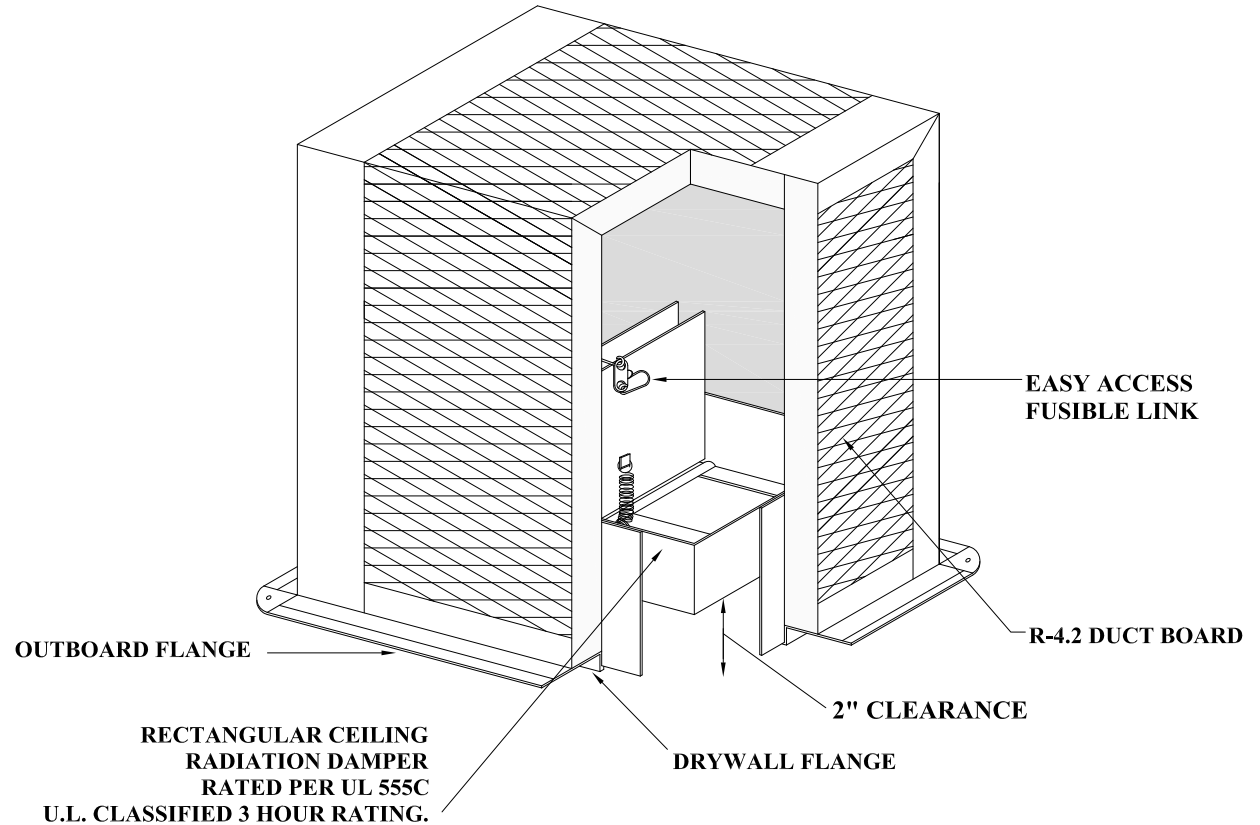
**FEATURES**

DUCT BOARD TOP AND SIDES.

R-4.2 INSULATION.

DUCT BOARD TOP AND SIDES ALLOW FOR  
VARIOUS COLLAR OUTLET SIZES.

BLACK INTERIOR.



**1 HOUR RATED CEILING RADIATION DAMPER AND  
FIBERGLASS PLENUM BOX ASSEMBLY RATED FOR USE  
WITH FLOOR/CEILING WOOD TRUSS ASSEMBLY  
CONSTRUCTIONS L558, L562, L563, L585, P533, P544, P545,  
P547 AND EQUIVALENT TYPES.**

**OPTIONS**

AVAILABLE WITH EXTENDED DRYWALL FLANGE  
FOR DOUBLE LAYER GYPSUM CEILING  
MATERIALS INSTALLATION.

**SPECIAL NOTES**

DUCT COLLAR(S): CUTTING AND INSTALLATION OF COLLARS FOR UL CLASSIFIED CLASS 0 OR 1  
FLEXIBLE AIR DUCTING CONNECTION COMPLETED BY OTHERS, (3) OUTLETS MAXIMUM.

CROWN MODEL No. 1292-CRD CORRESPONDS TO MODEL CRD-50-FGPB-4.2-CP AND  
MODEL CRD-50-EA-FGPB-4.2-CP.

LLOYD INDUSTRIES CEILING RADIATION DAMPER U.L. CLASSIFIED 3 HOUR RATING USED IN ASSEMBLY.