



6390 Philips Highway
Jacksonville, FL 32216
Phone (904) 737-7144

SPECIFICATION DATA SHEET

MODEL No. 3710

STRAIGHT TAKEOFF WITH GASKET RING

Date: 03/06/19 rev.

Drawn by: M.D.C.

DIMENSIONAL DATA

SIZES: 4" THROUGH 20" DIAMETER

COLLAR LENGTH 6" - ALL SIZES

FABRICATION DATA

MATERIAL:
HOT DIPPED GALVANIZED STEEL SHEET
PER ASTM-A653 CS TYPE B.

GAUGES:

4" THROUGH 8" = 28 GAUGE
9" THROUGH 14" = 26 GAUGE
16" THROUGH 20" = 24 GAUGE

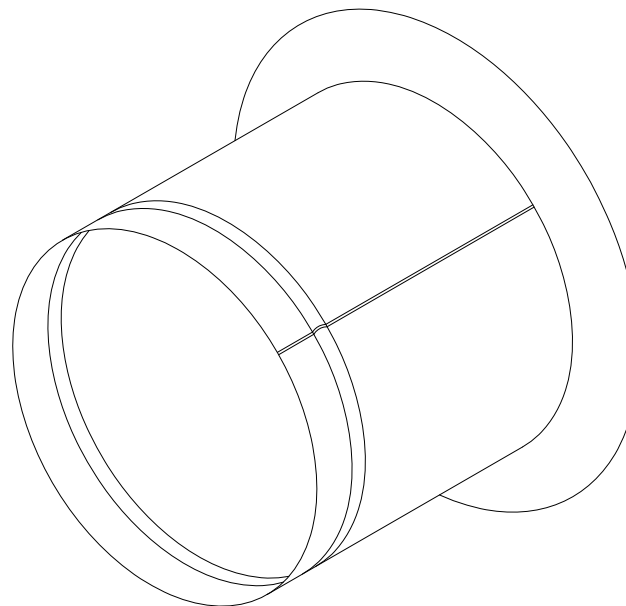
AIR FLOW CHARACTERISTICS

BASED ON 700 F/M VELOCITY IN MAIN DUCT, 600
F/M VELOCITY IN BRANCH DUCT. DESIGN
FRICTION LOSS OF .15" W.G. PER 100 FT. OF DUCT.
PRESSURE LOSS IN EQUIVALENT FEET OF
BRANCH DUCT = 25FT.

FEATURES

FABRICATED WITH CONTINUOUS WELD
LONGITUDINAL SEAM FOR NO AIR LEAKAGE
AT 2" W.G. STATIC PRESSURE.

FABRICATED WITH 1" WIDE GASKETED FLANGE
WITH PRE-DRILLED SCREWS HOLES FOR EASE
OF INSTALLATION.



OPTIONS

No. 3710-D: STRAIGHT TAKEOFF WITH MANUAL
VOLUME DAMPER.
No. 3710-DS: STRAIGHT TAKEOFF WITH MANUAL
VOLUME DAMPER AND 2" DAMPER
HANDLE STANDOFF.

SPECIAL NOTES

MADE TO MEET S.M.A.C.N.A. GAUGE STANDARDS. MAXIMUM 10" W.G. STATIC PRESSURE.
(S.M.A.C.N.A. HVAC DUCT CONSTRUCTION STANDARDS, THIRD EDITION-2005)