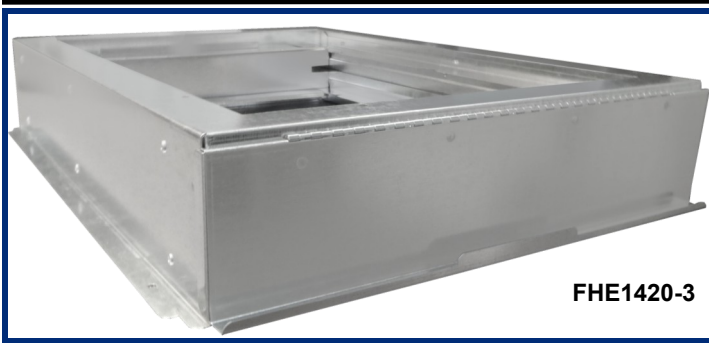
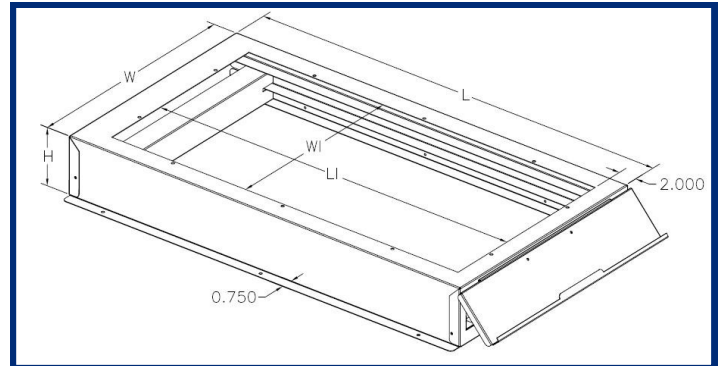


# Air-Tite Series

## FILTER HOUSINGS FOR ELECTRIC AIR HANDLERS



FHE1420-3



### Description

- The new **Air-Tite Series** Filter Housings by Crown Products offer the most well-built, sleek designed and easiest to use galvanized sheet metal filter housings on the market, for residential and light commercial use.
- Allows for easy access to furnace filters—no panels or door to remove.
- Made to fit all electric air handlers through 5 tons.
- Makes a clean and professional installation.
- Uses standard size pleated or panel filters.

### Standard Features

- Fully hinged door with magnetic latch and integrated handle provides a tight seal, eliminating air and debris from entering the filter box from surrounding area.
- Removable rails are easy to change to accommodate different filter sizes.
- Heavy 22 gauge galvanized sheet metal has been die cut for smooth edges, allowing for a smooth installation.

- Solid cabinet design is spot welded and riveted for sturdiness and long life.
- Tabs have rounded corners.
- Mounting holes are provided for faster installation.
- Individually boxed for convenient shipping and warehousing.

### AIR-TITE HOUSING - FOR 1" or 2" FILTERS

MODEL NO.	OUTSIDE DIMENSIONS			OPENING		FILTER SIZE
	W	H	L	W1	L1	
FHE1420-3	15 <sup>3</sup> / <sub>8</sub>	4	22	12 <sup>5</sup> / <sub>8</sub>	18 <sup>3</sup> / <sub>4</sub>	14 x 20
FHE1620-3	17 <sup>3</sup> / <sub>8</sub>	4	22	14 <sup>5</sup> / <sub>8</sub>	18 <sup>3</sup> / <sub>4</sub>	16 x 20
FHE2020-3	21 <sup>3</sup> / <sub>8</sub>	4	22	18 <sup>5</sup> / <sub>8</sub>	18 <sup>3</sup> / <sub>4</sub>	20 x 20
FHE2020-3T	23 <sup>1</sup> / <sub>2</sub>	4	22	19 <sup>3</sup> / <sub>4</sub>	18 <sup>3</sup> / <sub>4</sub>	20 x 20
FHE2025-3	26 <sup>3</sup> / <sub>8</sub>	4	22	23 <sup>5</sup> / <sub>8</sub>	18 <sup>3</sup> / <sub>4</sub>	20 x 25
FHE2025-3N	21 <sup>3</sup> / <sub>8</sub>	4	25	18 <sup>5</sup> / <sub>8</sub>	21 <sup>3</sup> / <sub>4</sub>	20 x 25

### AIR-TITE HOUSING - FOR 1" FILTERS

MODEL NO.	OUTSIDE DIMENSIONS			OPENING		FILTER SIZE
	W	H	L	W1	L1	
FHE1420-2	15 <sup>3</sup> / <sub>8</sub>	3	22	12 <sup>5</sup> / <sub>8</sub>	18 <sup>3</sup> / <sub>4</sub>	14 x 20
FHE1620-2	17 <sup>3</sup> / <sub>8</sub>	3	22	14 <sup>5</sup> / <sub>8</sub>	18 <sup>3</sup> / <sub>4</sub>	16 x 20
FHE2020-2	21 <sup>3</sup> / <sub>8</sub>	3	22	18 <sup>5</sup> / <sub>8</sub>	18 <sup>3</sup> / <sub>4</sub>	20 x 20
FHE-2025-2	26 <sup>3</sup> / <sub>8</sub>	3	22	23 <sup>5</sup> / <sub>8</sub>	18 <sup>3</sup> / <sub>4</sub>	20 x 25
FHE2025-2N	21 <sup>3</sup> / <sub>8</sub>	3	25	18 <sup>5</sup> / <sub>8</sub>	21 <sup>3</sup> / <sub>4</sub>	20 x 25

### AIR-TITE HOUSING - FOR 1", 2" or 4" FILTERS

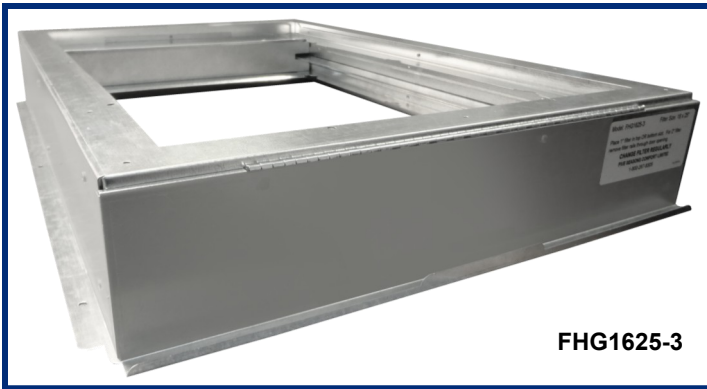
MODEL NO.	OUTSIDE DIMENSIONS			OPENING		FILTER SIZE
	W	H	L	W1	L1	
FHE1420-6	15 <sup>3</sup> / <sub>8</sub>	6	22	12 <sup>5</sup> / <sub>8</sub>	18 <sup>3</sup> / <sub>4</sub>	14 x 20
FHE1620-6	17 <sup>3</sup> / <sub>8</sub>	6	22	14 <sup>5</sup> / <sub>8</sub>	18 <sup>3</sup> / <sub>4</sub>	16 x 20
FHE2020-6	21 <sup>3</sup> / <sub>8</sub>	6	22	18 <sup>5</sup> / <sub>8</sub>	18 <sup>3</sup> / <sub>4</sub>	20 x 20
FHE2020-6T	23 <sup>1</sup> / <sub>2</sub>	6	22	19 <sup>3</sup> / <sub>4</sub>	18 <sup>3</sup> / <sub>4</sub>	20 x 20
FHE2025-6	26 <sup>3</sup> / <sub>8</sub>	6	22	23 <sup>5</sup> / <sub>8</sub>	18 <sup>3</sup> / <sub>4</sub>	20 x 25
FHE2025-6N	21 <sup>3</sup> / <sub>8</sub>	6	25	18 <sup>5</sup> / <sub>8</sub>	21 <sup>3</sup> / <sub>4</sub>	20 x 25



**CROWN PRODUCTS COMPANY, INC.**  
 6390 Philips Highway, Jacksonville, Florida 32216  
 Tel: (904) 737-7144 Fax: (904) 737-3533  
**Toll Free: 1-800-683-7144**  
 Email: info@crownproductsc.com

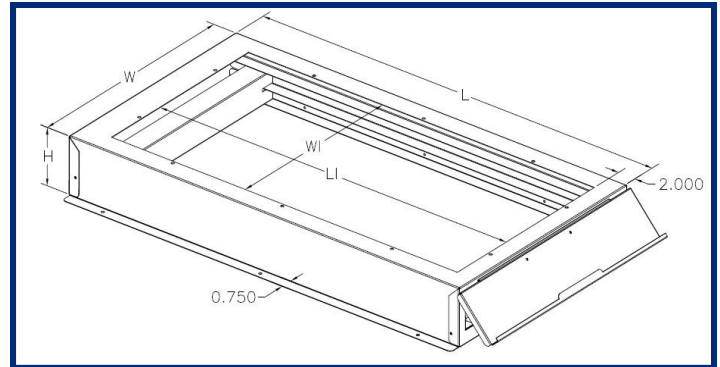
# Air-Tite Series

## FILTER HOUSINGS FOR GAS FURNACES



FHG1625-3

- Solid cabinet design is spot welded and riveted for sturdiness and long life.
- Tabs have rounded.
- Mounting holes are provided for faster installation.
- Individually boxed for convenient shipping and warehousing.



### Description

- The new **Air-Tite Series** Filter Housings by Crown Products offer the most well-built, sleek designed and easiest to use galvanized sheet metal filter housings on the market, for residential and light commercial use.
- Allows for easy access to furnace filters—no panels or door to remove.
- Made to fit all gas furnaces through 5 tons.
- Makes a clean and professional installation.
- Uses standard size pleated or panel filters.

### Standard Features

- Fully hinged door with magnetic latch and integrated handle provides a tight seal, eliminating air and debris from entering the filter box from surrounding area.
- Removable rails are easy to change to accommodate different filter sizes.
- Heavy 22 gauge galvanized sheet metal has been die cut for smooth edges, allowing for a smooth installation.

### AIR-TITE HOUSING - FOR 1" or 2" FILTERS

MODEL NO.	OUTSIDE DIMENSIONS			OPENING		FILTER SIZE
	W	H	L	W1	L1	
FHG1425-3	15 <sup>3</sup> / <sub>8</sub>	4	28 <sup>1</sup> / <sub>2</sub>	12 <sup>5</sup> / <sub>8</sub>	25 <sup>1</sup> / <sub>4</sub>	14 x 25
FHG1625-3	17 <sup>3</sup> / <sub>8</sub>	4	28 <sup>1</sup> / <sub>2</sub>	14 <sup>5</sup> / <sub>8</sub>	25 <sup>1</sup> / <sub>4</sub>	16 x 25
FHG2025-3	21 <sup>3</sup> / <sub>8</sub>	4	28 <sup>1</sup> / <sub>2</sub>	18 <sup>5</sup> / <sub>8</sub>	25 <sup>1</sup> / <sub>4</sub>	20 x 25
FHG2424-3	25 <sup>3</sup> / <sub>8</sub>	4	28 <sup>1</sup> / <sub>2</sub>	22 <sup>5</sup> / <sub>8</sub>	25 <sup>1</sup> / <sub>4</sub>	24 x 24
FHG3025-3	31 <sup>3</sup> / <sub>8</sub>	4	28 <sup>1</sup> / <sub>2</sub>	28 <sup>5</sup> / <sub>8</sub>	25 <sup>1</sup> / <sub>4</sub>	30 x 25

### AIR-TITE HOUSING - FOR 1" FILTERS

MODEL NO.	OUTSIDE DIMENSIONS			OPENING		FILTER SIZE
	W	H	L	W1	L1	
FHG1425-2	15 <sup>3</sup> / <sub>8</sub>	3	28 <sup>1</sup> / <sub>2</sub>	12 <sup>5</sup> / <sub>8</sub>	25 <sup>1</sup> / <sub>4</sub>	14 x 25
FHG1625-2	17 <sup>3</sup> / <sub>8</sub>	3	28 <sup>1</sup> / <sub>2</sub>	14 <sup>5</sup> / <sub>8</sub>	25 <sup>1</sup> / <sub>4</sub>	16 x 25
FHG2025-2	21 <sup>3</sup> / <sub>8</sub>	3	28 <sup>1</sup> / <sub>2</sub>	18 <sup>5</sup> / <sub>8</sub>	25 <sup>1</sup> / <sub>4</sub>	20 x 25
FHG2424-2	25 <sup>3</sup> / <sub>8</sub>	3	28 <sup>1</sup> / <sub>2</sub>	22 <sup>5</sup> / <sub>8</sub>	25 <sup>1</sup> / <sub>4</sub>	24 x 24
FHG3025-2	31 <sup>3</sup> / <sub>8</sub>	3	28 <sup>1</sup> / <sub>2</sub>	28 <sup>5</sup> / <sub>8</sub>	5 <sup>1</sup> / <sub>4</sub>	30 x 25

### AIR-TITE HOUSING - FOR 1", 2" or 4" FILTERS

MODEL NO.	OUTSIDE DIMENSIONS			OPENING		FILTER SIZE
	W	H	L	W1	L1	
FHG1425-6	15 <sup>3</sup> / <sub>8</sub>	6	28 <sup>1</sup> / <sub>2</sub>	12 <sup>5</sup> / <sub>8</sub>	25 <sup>1</sup> / <sub>4</sub>	14 x 25
FHG1625-6	17 <sup>3</sup> / <sub>8</sub>	6	28 <sup>1</sup> / <sub>2</sub>	14 <sup>5</sup> / <sub>8</sub>	25 <sup>1</sup> / <sub>4</sub>	16 x 25
FHG2025-6	21 <sup>3</sup> / <sub>8</sub>	6	28 <sup>1</sup> / <sub>2</sub>	18 <sup>5</sup> / <sub>8</sub>	25 <sup>1</sup> / <sub>4</sub>	20 x 25
FHG2424-6	25 <sup>3</sup> / <sub>8</sub>	6	28 <sup>1</sup> / <sub>2</sub>	22 <sup>5</sup> / <sub>8</sub>	25 <sup>1</sup> / <sub>4</sub>	24 x 24
FHG3025-6	31 <sup>3</sup> / <sub>8</sub>	6	28 <sup>1</sup> / <sub>2</sub>	28 <sup>5</sup> / <sub>8</sub>	25 <sup>1</sup> / <sub>4</sub>	30 x 25



**CROWN PRODUCTS COMPANY, INC.**  
 6390 Philips Highway, Jacksonville, Florida 32216  
 Tel: (904) 737-7144 Fax: (904) 737-3533  
**Toll Free: 1-800-683-7144**  
 Email: [info@crownproductscs.com](mailto:info@crownproductscs.com)  
 Web: [www.crownproductscs.com](http://www.crownproductscs.com)